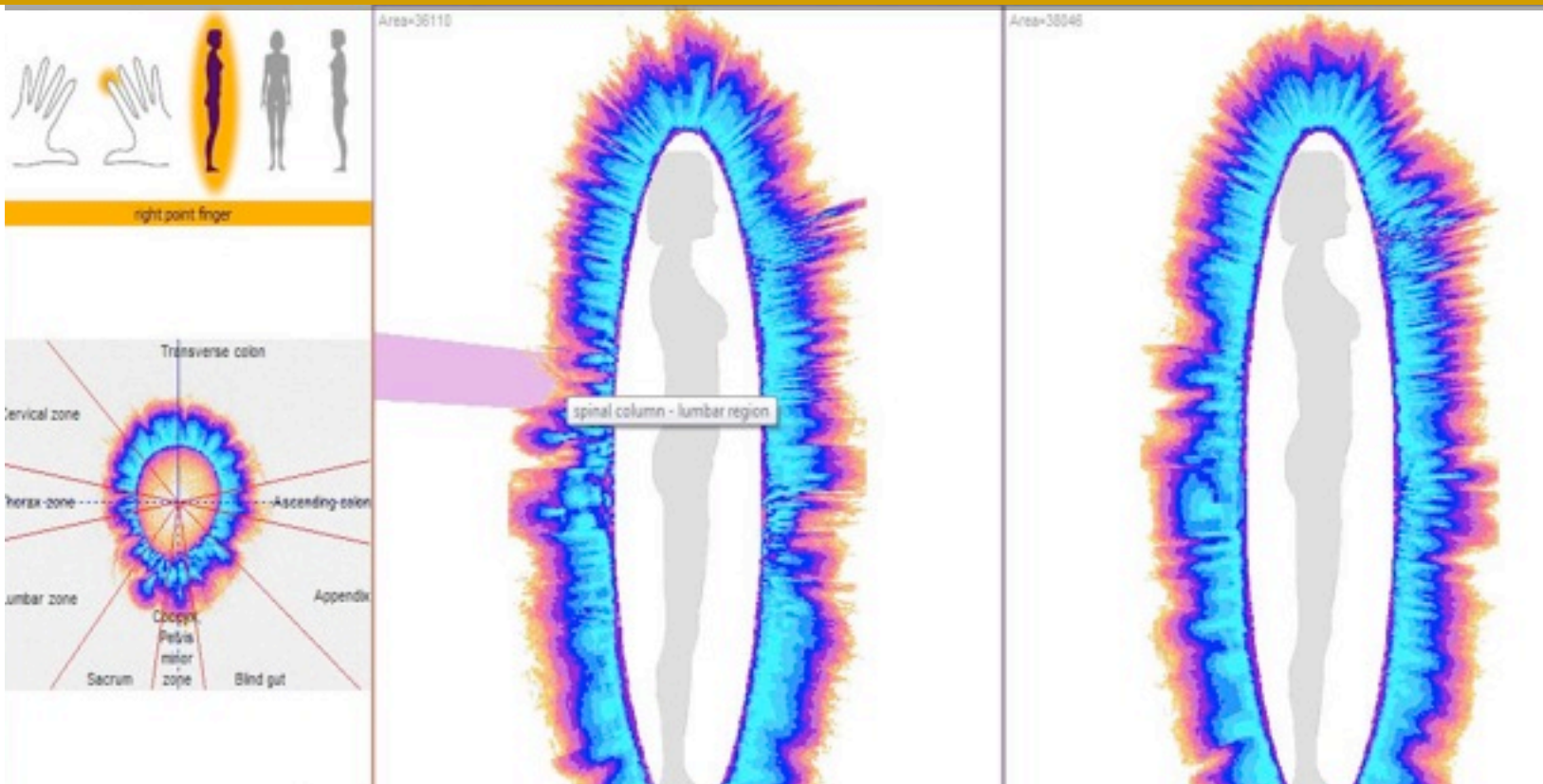


Art, Science and Spirit of **Electro Photo Imaging**

A
Light Stream
Emanations from a
Happy Finger

Exploring Frontiers of Light that
quantify Integral wellness of in ALL living systems.

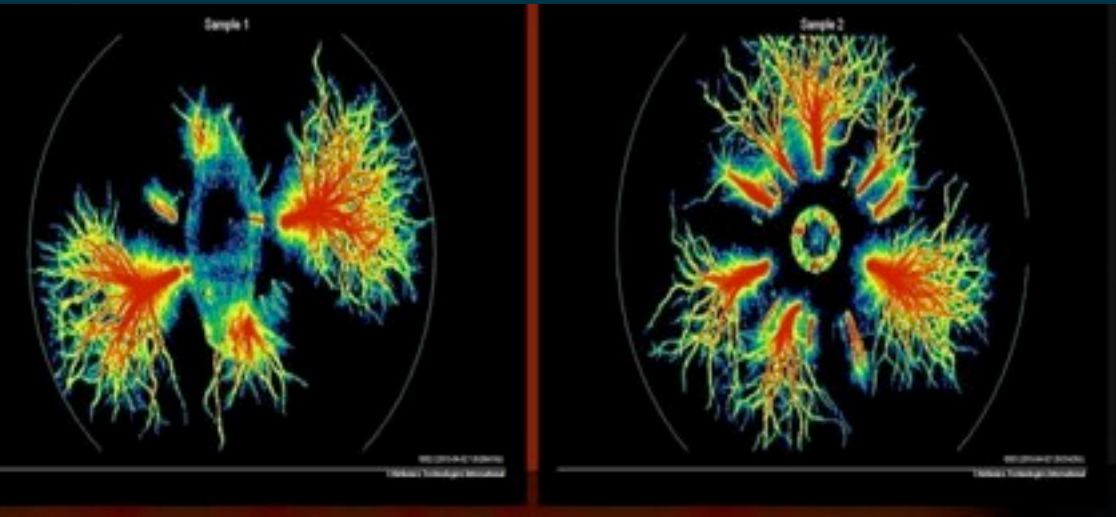


Pre + Post Light induction

WHAT IS ELECTRO PHOTON IMAGING :

Is based on stimulated emission of photons and electrons in excited states in a high-density electromagnetic field. The avalanche and sliding discharge effects that take place, function as amplification of weak emissions of electrons in excited states and photons (photon-multiplier effect) from materials or living objects/subjects.

Blue Sapphire Bio Photon Study Images



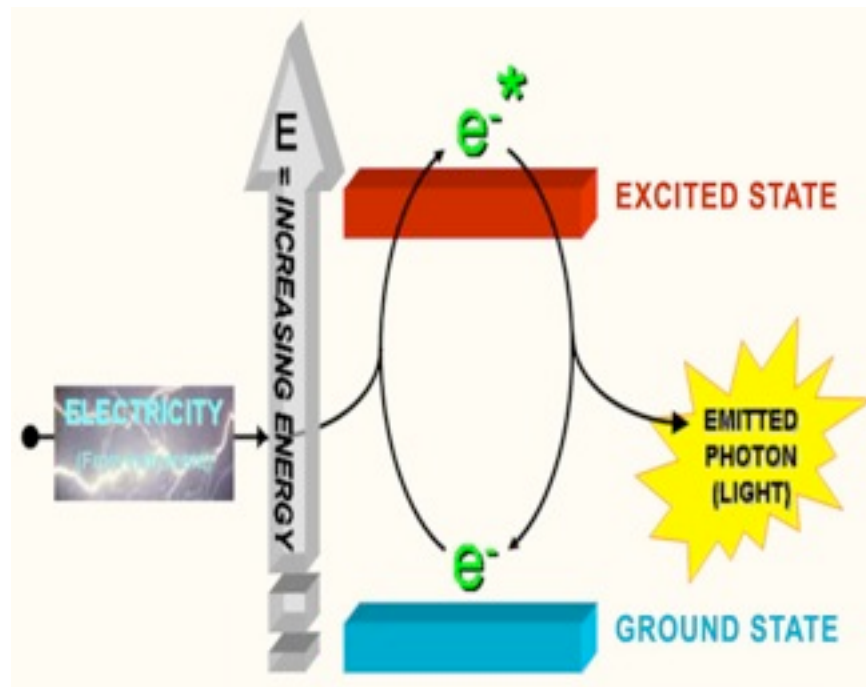
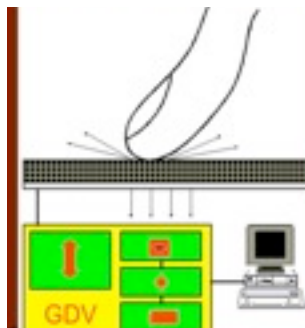
HOW DOES IT FUNCTION:

EPI utilizes a weak, electrical current applied to the fingertips for less than a millisecond. The body's response to this stimulus is the formation of a variation of an "electron cloud" composed of light energy photons. The electronic "glow" of this

discharge (invisible to the human eye) is captured by an optical CCD camera system and then translated into a digital computer file.

WHAT IS MEASURED WITH GDV:

Humans, plants, soil, gemstones, crystals, water and all biological systems.

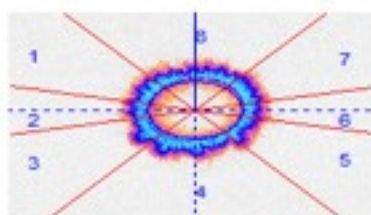




HERE'S AN EXAMPLE OF THE HUMAN FINGER TIPS:

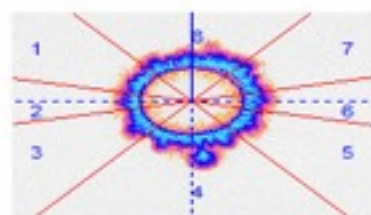
GDV Diagram

**Subject 1 - Capture 1
GDV-images without filter**

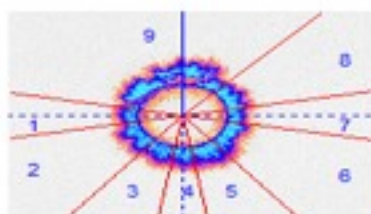


1L

1. Right eye
2. Right ear, Nose, Maxillary sinus
3. Jaw, Teeth right side
4. Throat, Larynx, Trachea, Thyroid gland
5. Jaw, Teeth left side
6. Left ear, Nose, Maxillary sinus
7. Left eye
8. Cerebral zone (cortex)



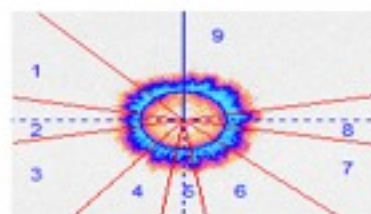
1R



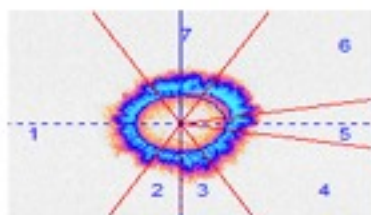
2L

1. Descending colon
2. Sigmoid colon
3. Rectum
4. Coccyx, Pelvis minor zone
5. Sacrum
6. Lumbar zone
7. Thorax zone
8. Cervical zone
9. Transverse colon

1. Cervical zone
2. Thorax zone
3. Lumbar zone
4. Sacrum
5. Coccyx, Pelvis minor zone
6. Blind gut
7. Appendix
8. Ascending colon
9. Transverse colon



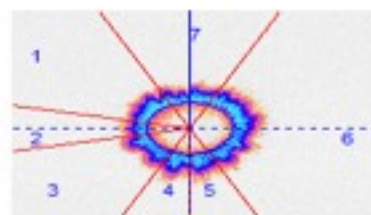
2R



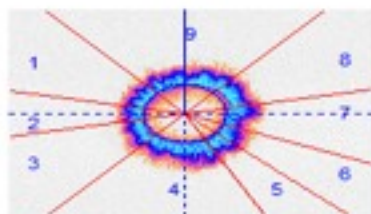
3L

1. Cardiovascular system
2. Left kidney
3. Liver
4. Abdominal zone
5. Immune system
6. Thorax zone, Respiratory system
7. Cerebral zone (vessels)

1. Thorax zone, Respiratory system
2. Immune system
3. Gallbladder
4. Liver
5. Right kidney
6. Cardiovascular system
7. Cerebral zone (vessels)



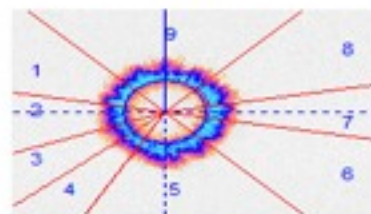
3R



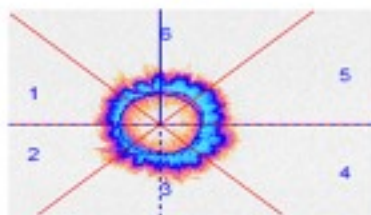
4L

1. Hypothalamus
2. Nervous system
3. Spleen
4. Urino-genital system
5. Adrenal
6. Pancreas
7. Thyroid gland
8. Hypophysis
9. Epiphysis

1. Hypophysis
2. Thyroid gland
3. Pancreas
4. Adrenal
5. Urino-genital system
6. Spleen
7. Nervous system
8. Hypothalamus
9. Epiphysis



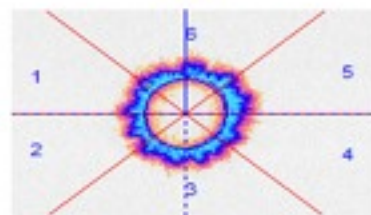
4R



5L

1. Left part of heart
2. Left kidney
3. Mammary glands, Respiratory system
4. Jejunum
5. Right part of heart
6. Coronary vessels

1. Duodenum
2. Ileum
3. Mammary glands, Respiratory system
4. Right kidney
5. Heart
6. Coronary vessels



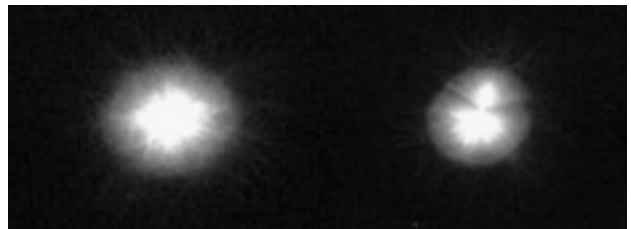
5R

We are ALL children of the Sun, living on the light of the world, and we ourselves (cells) emit light!

WHAT CAN WE LEARN FROM THIS:

- Express-assessment of psycho-emotional and physiological states of a human body
- Express-assessment of stress level
- Express-assessment of overall wellness
- Express-assessment of energy state of organs and systems in human body
- Revealing of real reasons and sources of illness
- Holotropic states of consciousness
- Assessment of person's reaction on different energetic practices and meditation
- Assessment of person's reaction on different influences and physical loads
- Assessment of person's reaction on the applied treatment (energy therapy, SPA, massage, color therapy, acupuncture, meditation, relaxation, extrasensory influences, etc.)

**HERE IS AN EXAMPLE
OF WATER INDUCED
WITH LOVE OVER
7000 MILES**



TO OBTAIN A HUMAN ENERGY FIELD EVALUATION OR FOR RESEARCH CONSULTATIONS: You may contact Krishna Madappa at his Institutes lab in Taos, New Mexico, who is a close colleague of Dr. Konstantin Korotkov, visionary inventor of the EPI/GDV.

Krishna can be reached in the following pathways:

E-mail: Krishna@krishnaprana.com

Cell: 575-770-3304

Web sites: krishnaprana.com;
gdvusa.org; issstaos.org

Dr. Konstantin Korotkov's web site:
korotkov.org

